

**Risk-based
Process Safety Management
Consulting Service**

CoreSafety

CoreSafety Software will enhance Process Safety Management within the organization by visualizing the risk in plants and managing below information in the library.

Fault Schedule

- Easy access to risk scenario and risk information through digitalized fault schedule.
- Easy preparation by using the library (CoreSafety provides Fault Schedule templates on different plant components).

Functional Requirement

- Centralized different function requirements (i.e. Safety requirements specifications, maintenance requirements etc.).
- Ties functional requirement with risk scenario.

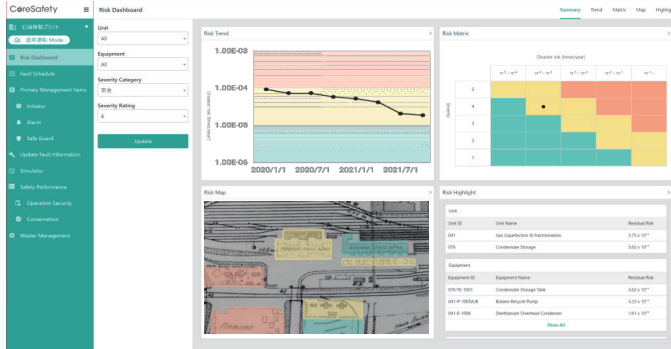
Process Safety KPI

- Freely set the Process Safety KPI based on user's live plant operation and maintenance activities.
- Update the Process Safety KPI online.

Real Time Maintenance

- Update and monitor the maintenance information online.
- Share the latest status within the organization.

1 | Visualize Up to Data Risk in Plants

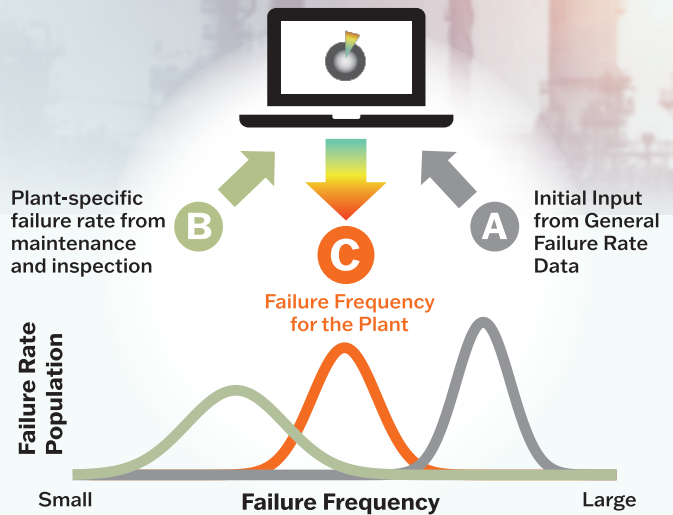


Visualizing information on a dashboard will allow you to easily grasp the current risk in a plant.

There are several types of reports shown on the dashboard, allowing everyone to easily monitor the real-time risk.

2 | Update/Monitor Risk using Bayesian Inference

Risk-based process safety management can be driven by checking if suitable actions are taken based on the obtained information.



3 | Manage Both Fault Schedule and Functional Requirement

CoreSafety software allows users to centralize all information in one database.

By centralizing Fault Schedule and Functional Requirement, CoreSafety allows users to easily manage and pull out necessary information throughout the facility operation.

